

Canvas Tips for Faculty

Turnitin-Canvas Integration

Turnitin is an academic integrity verification tool that integrates with Canvas. To set up your assignments for Turnitin follow these steps:

Note: Brookdale's instance of Turnitin was modified in May, 2016 so that you should no longer have to set points and dates in Turnitin as well as in Canvas. Turnitin should respect the points and dates you set in Canvas.

1. If you wish to use a Canvas rubric and have not already added it, you must do so before proceeding. Canvas rubrics cannot easily be added once the assignment is configured for Turnitin.
2. Edit your assignment. Choose External Tool from the Submission Type drop-down. You will no longer select Online for Turnitin assignments.

Submission Type

External Tool

External Tool Options

External Tool URL

Load This Tool In A New Tab

Submission Type > External Tool

3. Click the Find button to the left of the External Tool URL field to view a list of external tools.

Submission Type

External Tool

External Tool Options

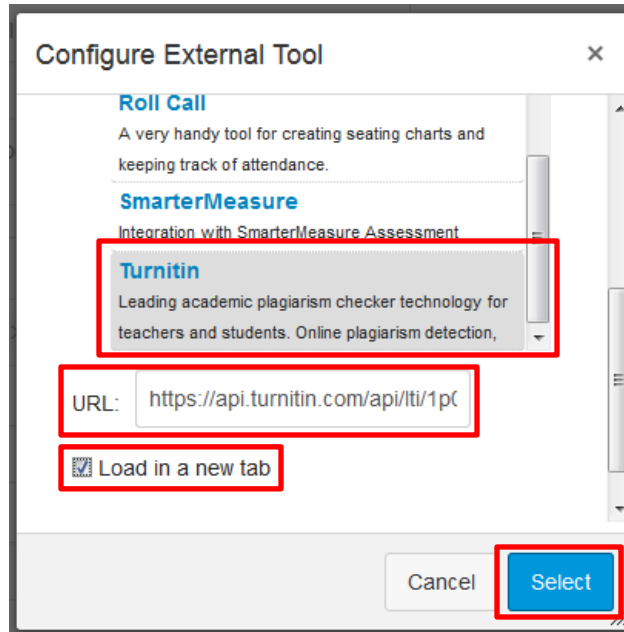
Enter or find an External Tool URL

Load This Tool In A New Tab

Find external tool

4. The Configure External Tool dialog appears. Scroll down using both scrollbars and click Turnitin. Ensure that the URL field populates. Canvas and Turnitin recommend checking Load in a new

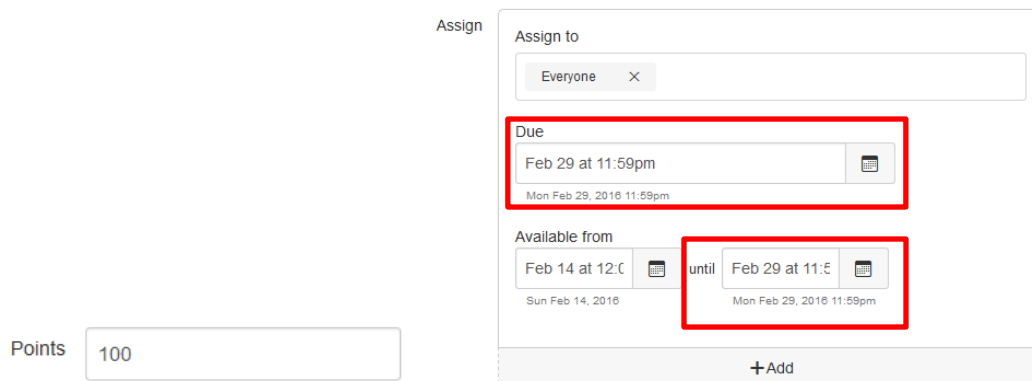
tab. Then, click Select.



External Tool Dialog

5. Fill in other assignment information, including instructions, points, and dates.

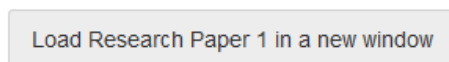
Note: Turnitin does not support a grace period as Canvas does; that is, it does not support an Available Until date that is later than the Due date. Therefore, you should set your Available Until date to match your Due date with Turnitin assignments.



Points and dates information; Due and Available Until dates should match

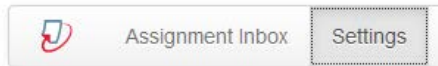
6. The dates and points information in Turnitin should automatically match that information in Canvas. To verify, click the button provided to load the assignment in a new window.

This tool needs to be loaded in a new browser window



Load assignment in new window

7. The assignment opens in Turnitin. Click Settings.



Turnitin settings

8. Ensure that the Max Grade, Start Date, and Due Date matches the information you set in Canvas. Turnitin also requires that you set a feedback release date, at which feedback becomes visible to students. To make feedback available immediately, set this date to match the start date.

Max Grade
100

Start date
14 Feb 2016 00:00

Due date
29 Feb 2016 23:55

Feedback release date
14 Feb 2016 00:00

Turnitin settings

9. If you've made any changes, click Submit. Otherwise, you may navigate away from this page.